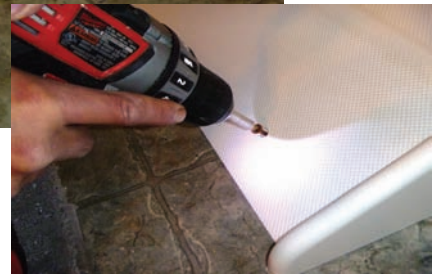


# Bathtub Roll-In Conversion Kit Installation Guide

With Non-Skid Threshold



**AmeriGlide**

[www.ameriglide.com](http://www.ameriglide.com)



1. **Measure** the elevation difference between the tub floor and the bathroom finished floor. This should not exceed 3 ½". Differences between 3 ½" up to 6" required elevation spacers to be installed between the threshold and the bathroom floor. (see page 5 - Threshold Support).

2. **Measure** the top of the tub wall. This should not exceed 9".

3. **Measure** the tub wall height from the bathroom finished floor to the top of the wall. This should not exceed 19".

4. **Mark** the center of the top of the tub wall 33 ¼" wide; when necessary, the opening and threshold can be created less than 33 ¼".

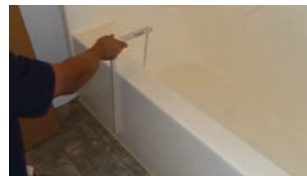


5. **Mark** the tub walls perpendicular, inside and out, with the template. Extend the marks down to the bathroom floor and down to the flat tub floor inside. Check the width.



6. **Mark** the tub floor parallel with the outside of the tub wall. Use the included callipers to ensure that the inside line is parallel with the outside of the tub wall:

- Insert the pen** in the calliper pen holder.
- Place the calliper** over the tub wall.
- Holding the calliper against the outside wall, adjust the pen to **mark the flat tub floor**, left and right.
- Mark a short line** left and right; join the marks with a straight edge.



7. Check the marks and tape outside of the marks; this will prevent chipping and tub marring.



*Always leave a 1" section of the top of the wall uncut, LEFT and RIGHT to prevent blade pinch (this will be the last section to cut)*

\*\*\*\*\*

## CUTTING THE TUB

**Eye, Ear and Nose Protection are recommended**

**FIBERGLASS TUB:**

Cut with a Sawzall, using an 18 teeth per inch blade

Remove cut-out section



continued on p. 3

The fiberglass tub has wood pressboard attached to the underside of the fiberglass floor. A GROOVE NEEDS TO BE FORMED UNDER THE FIBERGLASS EDGE FOR THE THRESHOLD TRI-SEAL TO FIT INTO.

Using a Rigid #R2401 Router with a 1/4" straight-bit, hollow out a 1/4" by 3/8" deep recess to receive the lower lip of the threshold tri-seal.

The tub floor must be supported from the sub-floor with shims to ensure no movement during usage.

Non-Skid Threshold Tri-Seal



© 2011 safebathtub, inc  
Patent Pending

## STEEL TUB:

Eye, Ear, and Nose Protection Are Recommended

### Tub Floor:

Using a 4 1/2" Grinder with a diamond masonry blade cut a SHORT ENTRY HOLE on the line of the tub floor.  
Finish the tub floor cut, left to right, using a saws-all 18 teeth per inch blade.

### Tub Wall:

Start on the corners and cut down the inside, then outside; Leave a 1" strip on the top of both sides for stability; make the 1" strips the last cut; remove the cut-out tub wall section.  
The tub floor must be supported with shims to prevent movement during usage.

## CAST IRON TUB

- \* MUST use a DUST MUZZLE (available at: 877-223-2154)  
AND a SHOP VAC with a DISPOSABLE PAPER BAG FILTER
- \*Safety Goggles, Dust Mask, and Ear Protection are recommended

Using the right-angle grinder with a 4 1/2" diamond blade (masonry) slowly cut, making 3 - 4 passes (takes about 50-60 min.)

Difficult to reach areas with the round blade must be finish-cut with a saws-all 18 tpi metal cutting blade





## BEGIN CONSTRUCTION

### TUB WALL-END PLUGS

Mark, cut and fit tub end plugs from 2 x 6 x 12" material and secure by forcing the 2" cut plug material up into position. Note: Fiberglass and steel tubs require 2 screws and caps per side; 1 on the top and 1 on the outside to secure the plug in place; this also reinforces the tub wall.



### 3/4" FINISH END-CAPS

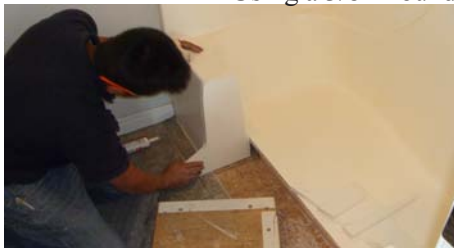
Place the end-cap material against the cut, tub wall end; mark the end caps 1/2" proud of the tub wall, using the pencil provided



With the ramp sample, mark the finish end-caps 1/2" proud of the slope of the ramp; then cut, router and secure.



Using a 3/8" Round-over Router, finish both sides of the endcaps.



# NON-SKID THRESHOLD SUPPORT

**\*IMPORTANT\*** The threshold ***MUST SLOPE INTO*** the tub floor at 1/4" per foot so the water drains **INTO** the tub and down the drain.

Place and fit the threshold support 2 x 2 x 30" with shims using the ramp sample as a guide; the ramp entrance side should stand proud of the bathroom floor 3/8"



If the elevation difference between the bathroom floor and the tub floor is greater than 3/2", use the 1/2" x 32" elevation spacer provided, on edge; cut to proper width to raise the entrance side of the threshold, thus maintaining the 1/4" per foot slope.



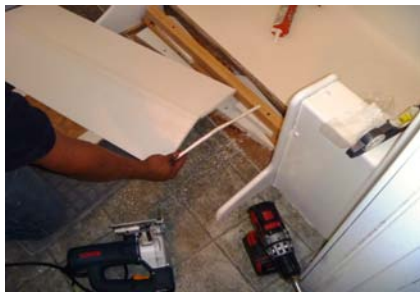
## CAUTION!

Floors with radiant heat should ***never*** be screwed or nailed into.

Cement Floors or floors with radiant heat: lay a 2x4" flat on the floor between the finished end-caps; countersink and screw into the 2x4"; this gives a base to screw into when securing the threshold down to the floor; be sure to place the 2x4" so the threshold will fit properly.

# NON-SKID THRESHOLD

Measure the threshold opening; mark and cut the non-skid threshold for a tight fit.



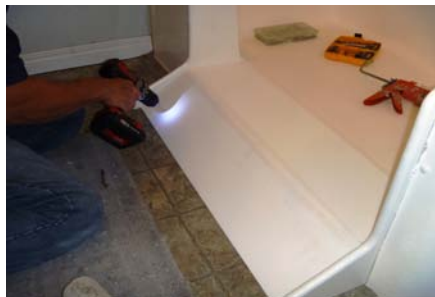
Caulking the tri-seal:



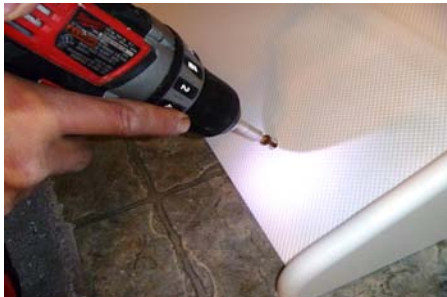
Setting the non-skid threshold:



Securing the non-skid threshold:



Countersink with 3/8" bit



Plugging the screw hole



Before Caulking: Clean all caulking surfaces with denatured alcohol

